



This functionality is available from mSupply mobile v7.0.0 onwards

[NeedsReview](#)

Cold Chain (for Vaccines and other Cold chain items)

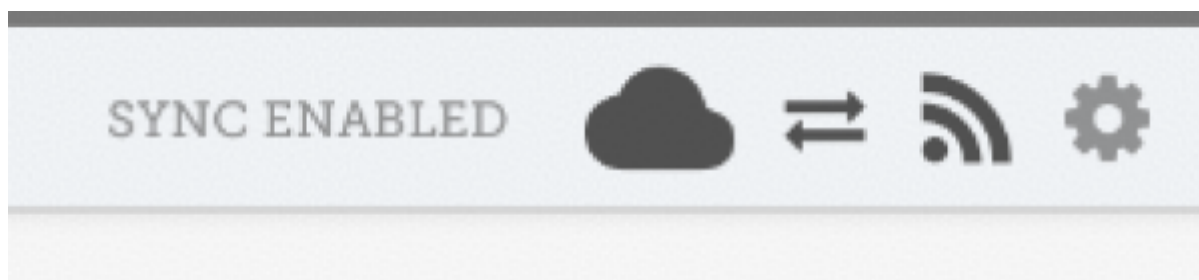
Setting up to use the Vaccine module

Vaccine mode only shows **if the store is configured correctly on the server**, with the preference 'mobile: Uses vaccine module' enabled. Read how [here](#)

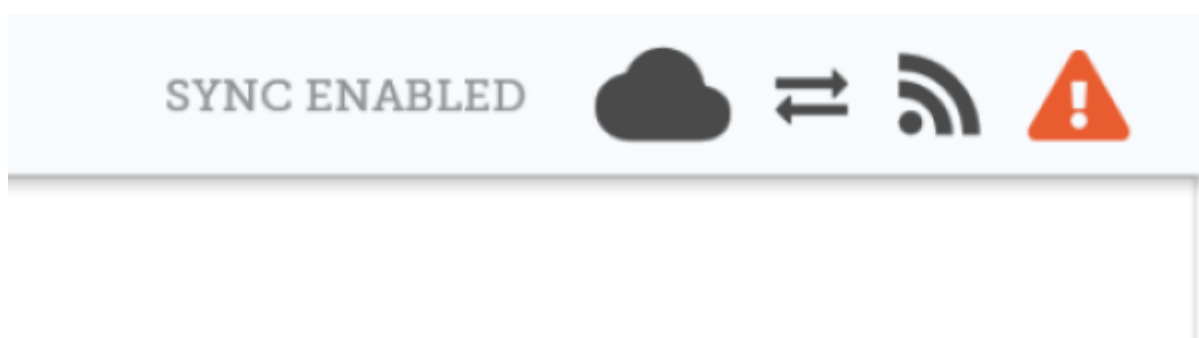
Permissions and Services

The vaccine module requires additional permissions and services to be enabled on your mobile device.

When all permissions and services required for Mobile ColdChain are enabled, the 'cog icon' will be in the mSupply Mobile title line (top right of your mobile screen):

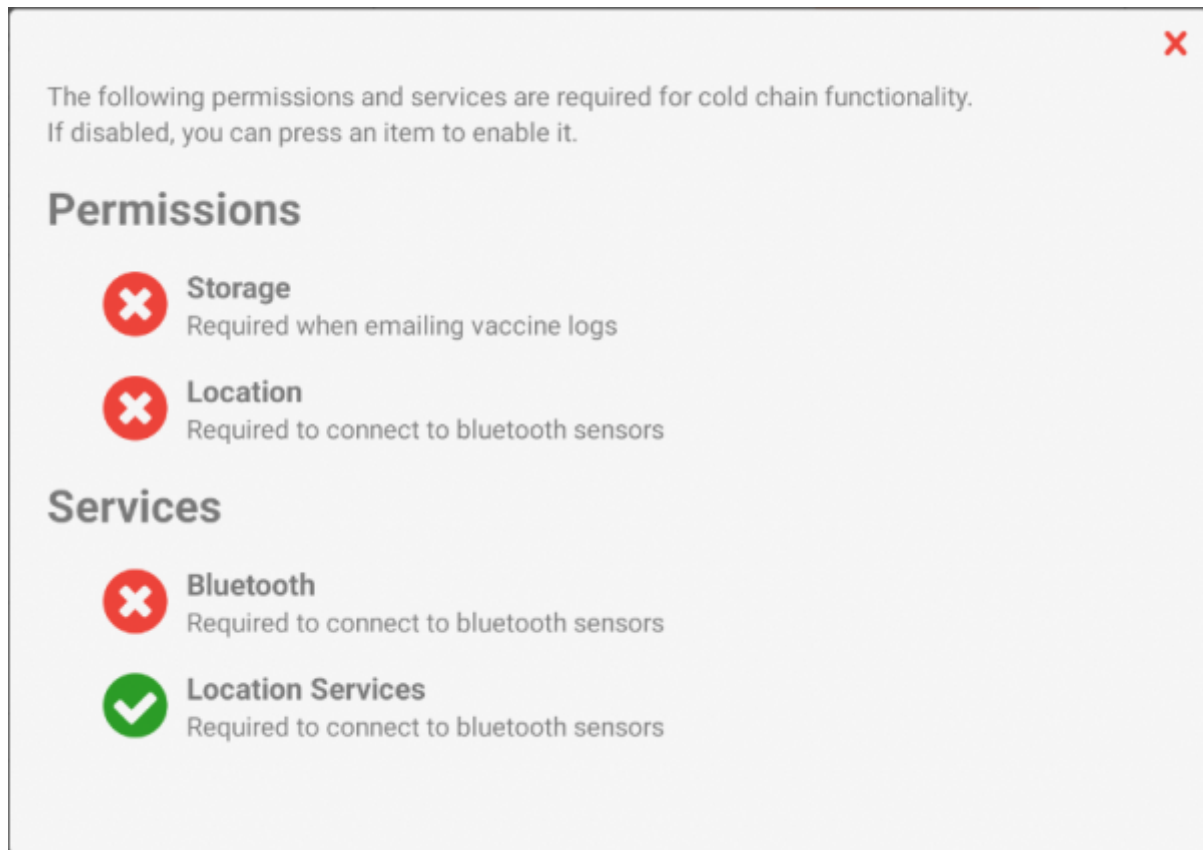


However, if some required permissions and services are disabled, the 'hazard icon' will be in the mSupply Mobile title line:

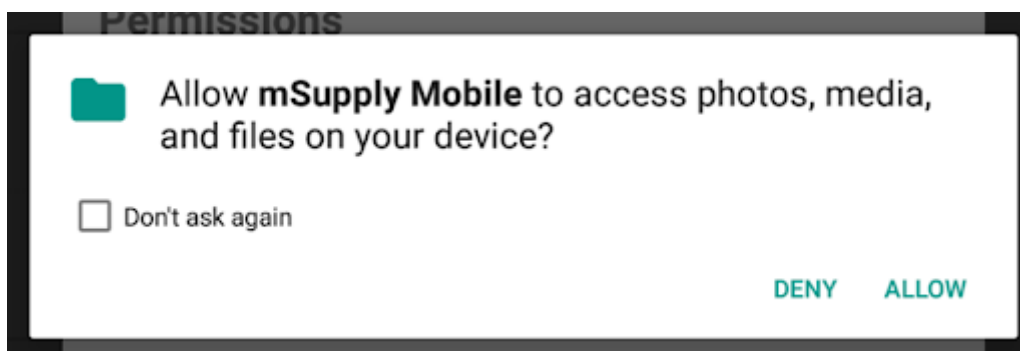


If your title line shows that some permissions and services are disabled, press on the 'hazard icon' to open the **Permissions and Services** window.

Any permission or service that is disabled will be indicated with a 'cross icon' as below:

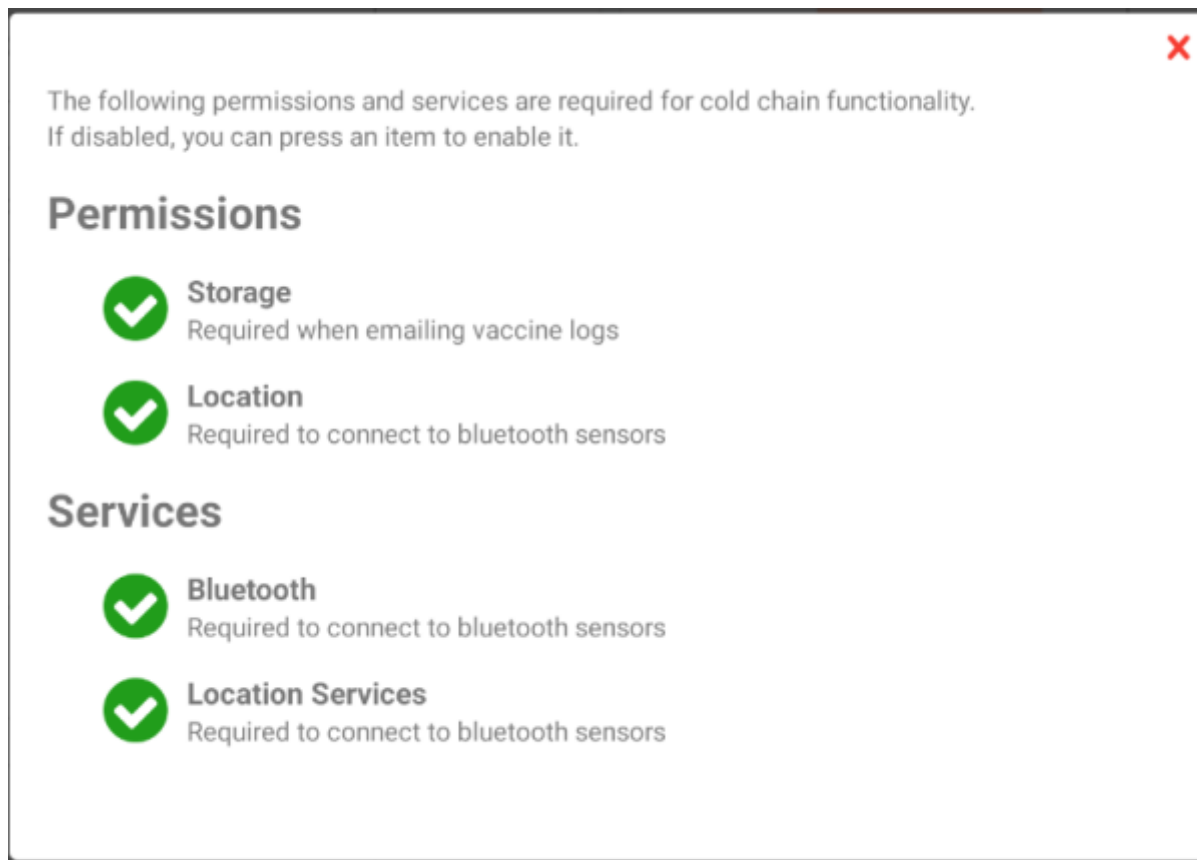


To enable, simply press on the cross icon next to the permission or service. Your device will prompt you to enable the permission or service.



Press Allow.

Once all of the permissions and services have been enabled, your window will look like this:



Approved mSupply Temperature Sensors

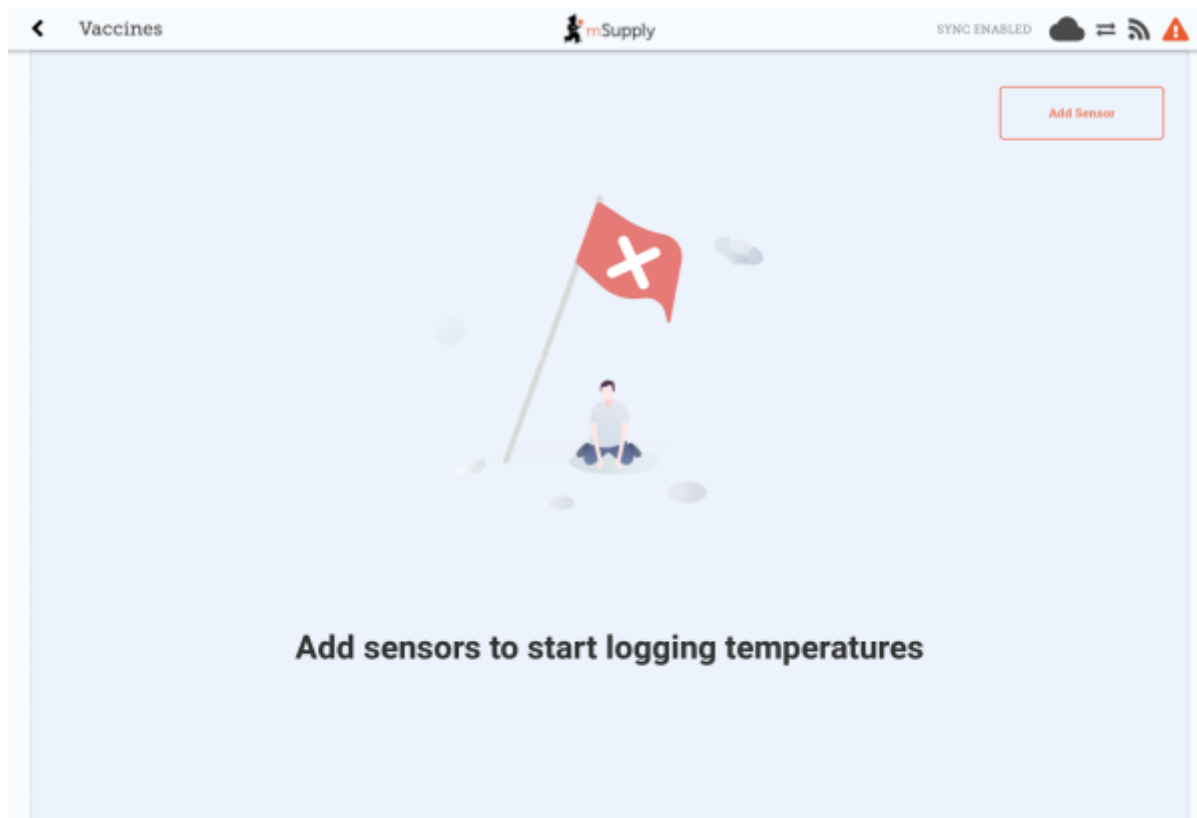
The following is a list of approved temperature sensors that will work together with mSupply ColdChain and mSupply Mobile: Vaccines. These sensors have been approved by the World Health Organisation as a temperature monitoring device suitable for use in immunization programmes.

- Blue Maestro Tempo Disc™ Waterproof IP67 Bluetooth Temperature Sensor Beacon and Logger [Download PDF](#).

Approved sensors can be purchased directly from the manufacturer or reseller online. Please contact coldchain@msupply.foundation for further information.

Adding Sensors

The first time you use the Vaccine module, there will be no sensors connected to your device.



Tap **Add Sensor** to start the three-step process to add a sensor.

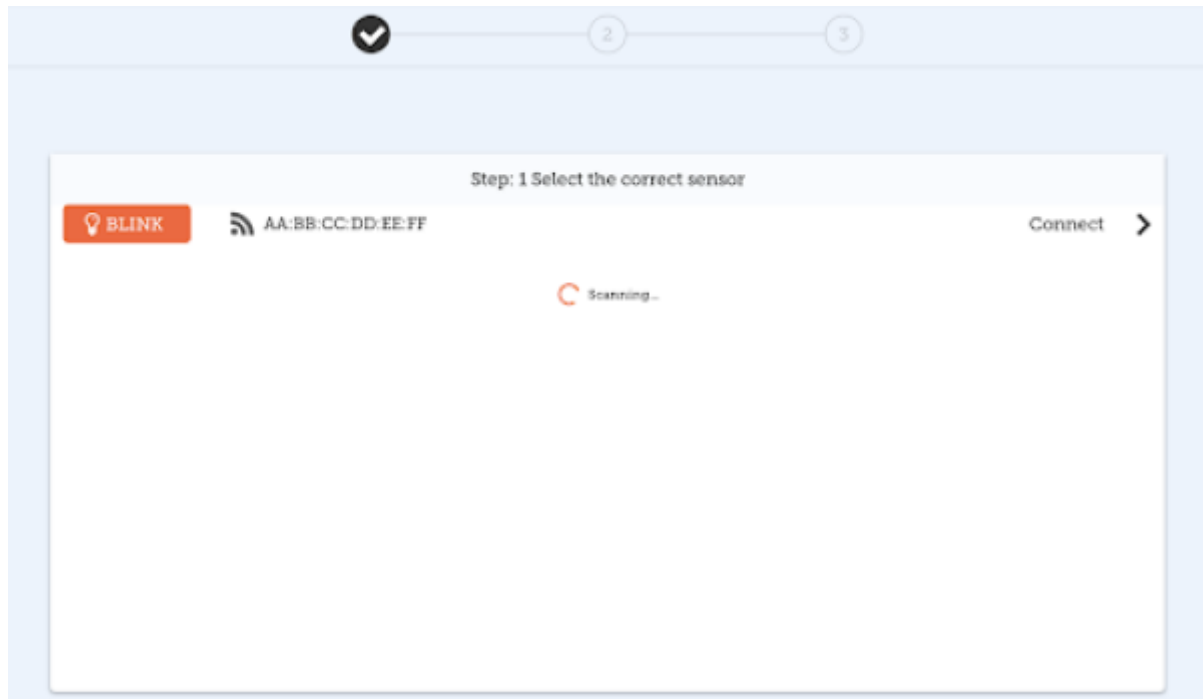


Please make sure that you have an approved mSupply temperature sensor. Only approved sensors can be connected to mSupply Mobile.

We recommend you keep the sensor close when you are adding or editing it within mSupply Mobile. Also, allow for up to a minute for any changes to be communicated via Bluetooth. If you are using a brand new sensor, press the top of the sensor until it flashes to turn it on.

Step 1: Select the correct sensor

When you tap **Add Sensor**, your device will scan and list any sensors that can be connected by Bluetooth.



If you tap the **BLINK** button, the LED light for that sensor will flash. You can use this to make sure that you are connecting the correct sensor.

When you are sure that you have the correct sensor, tap **Connect** for that sensor.

Step 2: Sensor Thresholds

Firstly, some definitions:

- Consecutive means a single event where the temperature stays over (or under) the threshold for the whole time. So if you have a threshold of 8 degrees, and a consecutive breach time of 10 minutes, then a breach that lasts for 6 minutes, then drops under the threshold for 2 minutes, then breaches again for 6 minutes is not a consecutive breach, but the 2 x 6 minute breaches are added to the cumulative breach records.
- Cumulative means adding together the total time over a certain temperature for a series of breaches.

Now we can set the temperature breach conditions for the sensor. There are four thresholds that you can define:

- Hot Consecutive
 - A breach will be displayed when the sensor logs a temperature above this value for longer than the specified time. Using the +/- buttons, select the maximum temperature and minimum duration required to identify the breach.
- Cold Consecutive
 - A breach will be displayed when the sensor logs a temperature below this value for longer than the specified time. Using the +/- buttons, select the minimum temperature and minimum duration required to identify the breach.
- Hot Cumulative
 - A breach will be displayed when the sensor logs a temperature above this value for longer

than the total specified time specified (total time is calculated as the sum of all breach times). Using the +/- buttons, select the maximum temperature and minimum total duration required to identify the breach.

- **Cold Cumulative**
 - A breach will be displayed when the sensor logs a temperature below this value for longer than the total specified time specified (total time is calculated as the sum of all breach times). Using the +/- buttons, select the minimum temperature and minimum total duration required to identify the breach.

Step: 2 Sensor Thresholds

Hot consecutive	Duration	20 minutes	Temp	8.00 °Celsius and above
Cold consecutive	Duration	20 minutes	Temp	2.00 °Celsius and below
Hot cumulative	Duration	20 minutes	Temp	8.00 °Celsius and above
Cold cumulative	Duration	20 minutes	Temp	2.00 °Celsius and below

Back Cancel Next

TIP: It is possible to **long press** the +/- buttons to change the values faster.

Tap Back if you wish to return to Step 1 and check that you have the correct sensor. Tap Next to move to Step 3. Tap Cancel if you no longer want to add the sensor.

Step 3: Sensor connection

In this final step you need to enter:

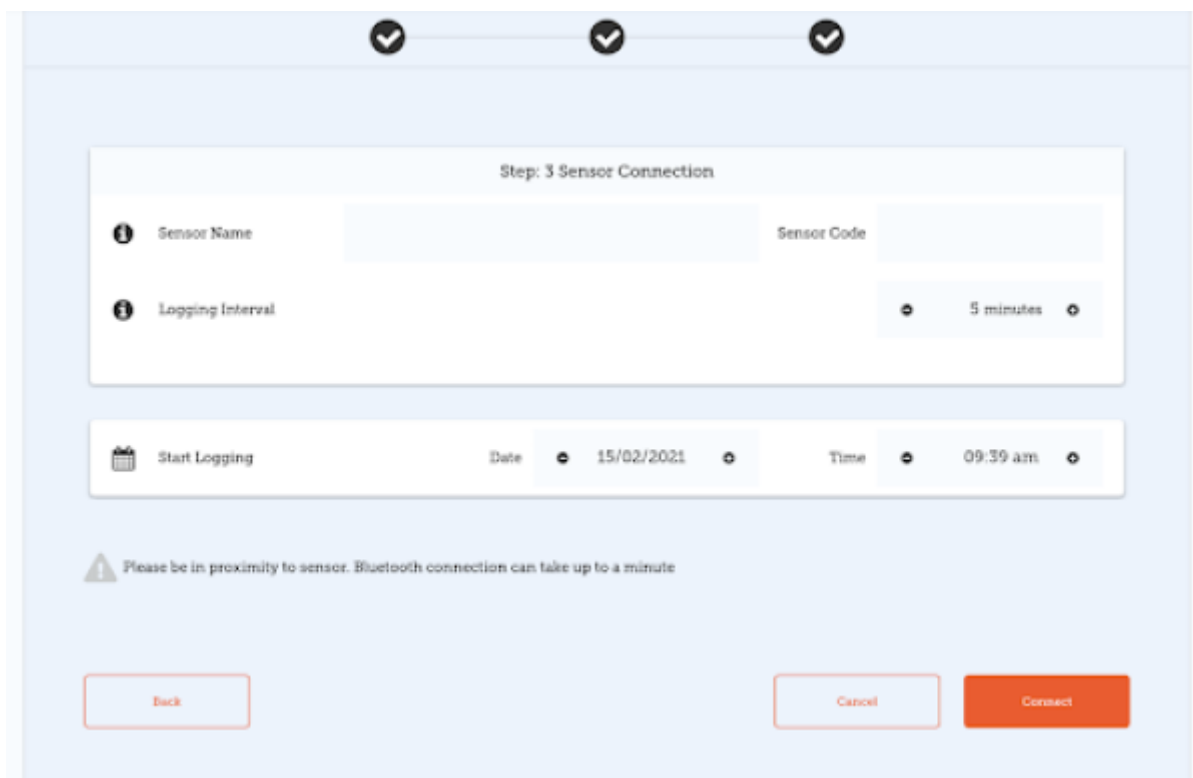
- **Sensor Name:** enter a new name for the sensor. This is the name which will appear within mSupply mobile. You should choose a name to make it easy to identify the sensor.
- **Sensor Code:** enter a short name code for the sensor. You should choose a code that is unique for each sensor.

TIP: For reporting purposes, we recommend that you do not use special characters such as "-", "+", "*" etc in either the Sensor Name or Sensor Code fields.

- **Logging Interval:** using the +/- buttons, select the length of time between temperature logs. You can set the logging interval to any length between 1 and 30 minutes. The default logging interval is 5 minutes.

- **Start Logging:** Use the +/- buttons to select the delay in minutes from now of the first temperature log. The sensor can be configured to start a maximum of 30 days from the current date.

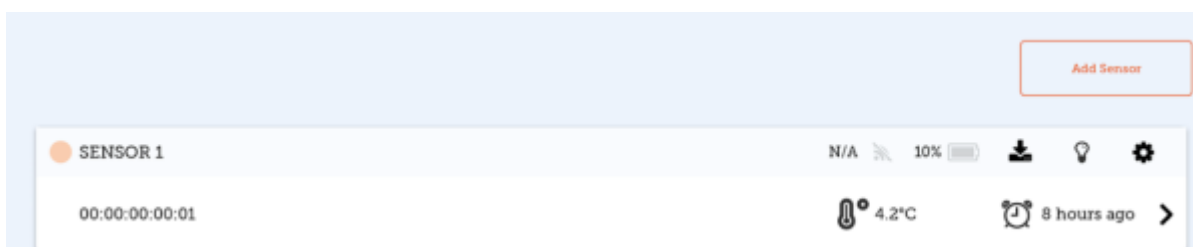
When setting the schedule for the first temperature log, allow sufficient time for the sensor to be placed in its desired location and adjust to the location's temperature. 20 minutes should be sufficient in most situations.



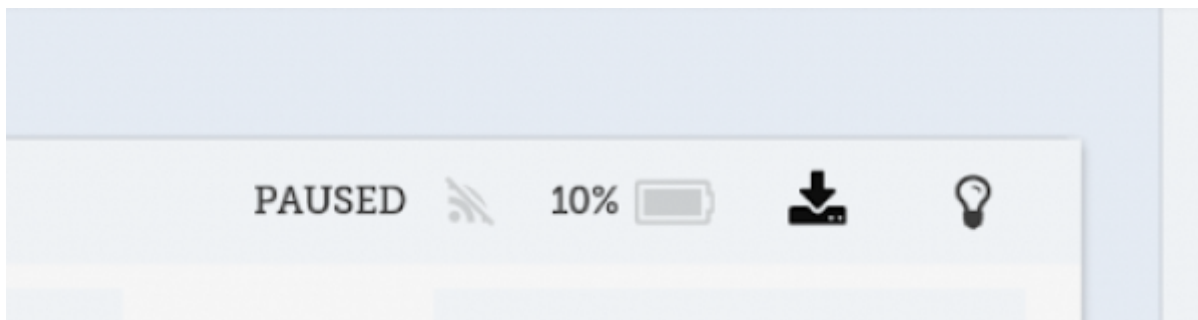
Tap **Connect** to complete sensor setup and add the sensor to mSupply mobile. This will return you to the mSupply mobile vaccine home screen and you will see the sensor has been added.

Tap **Back** if you wish to return to Step 2 and edit the sensor thresholds (temperature breach conditions).

Tap **Cancel** if you no longer want to add the sensor.

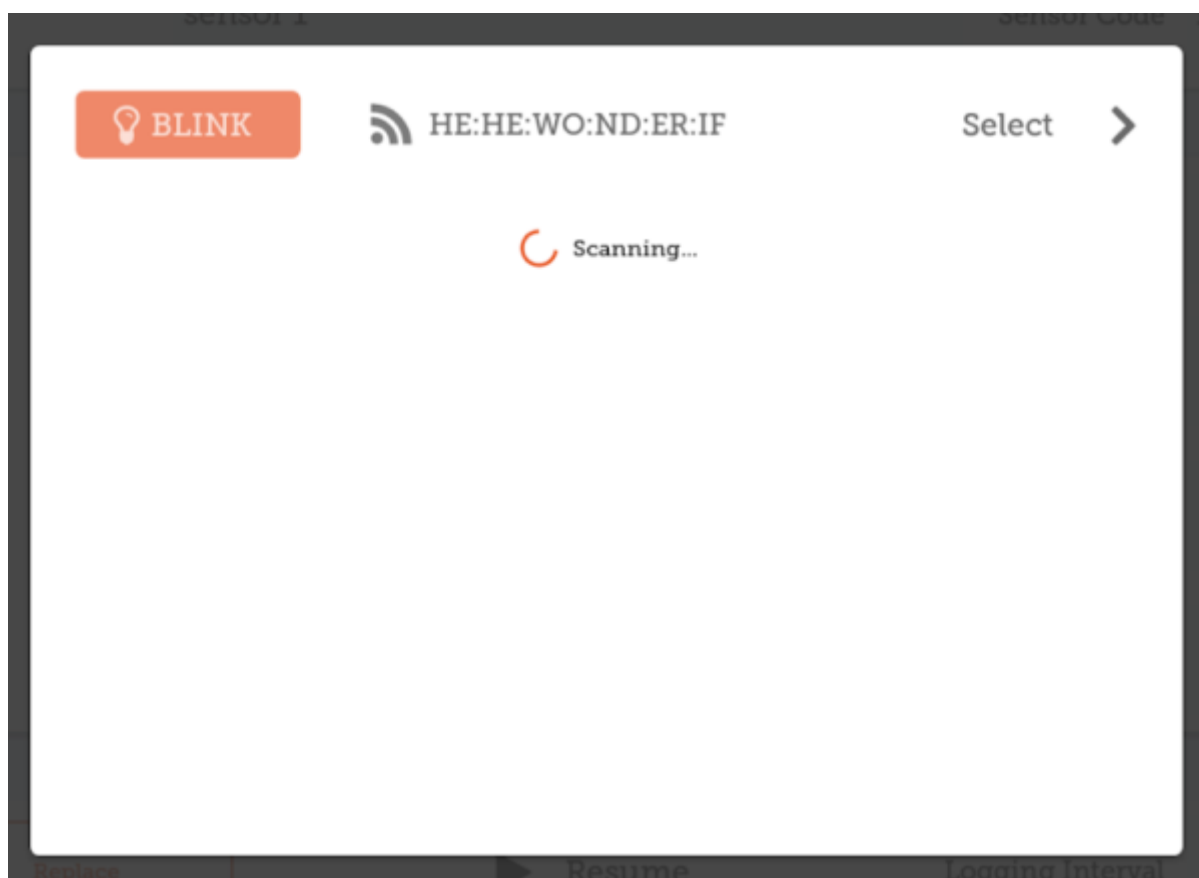


We recommend that each device should be linked to a maximum of six sensors. Each sensor should only be linked to one device.



Replacing a Sensor

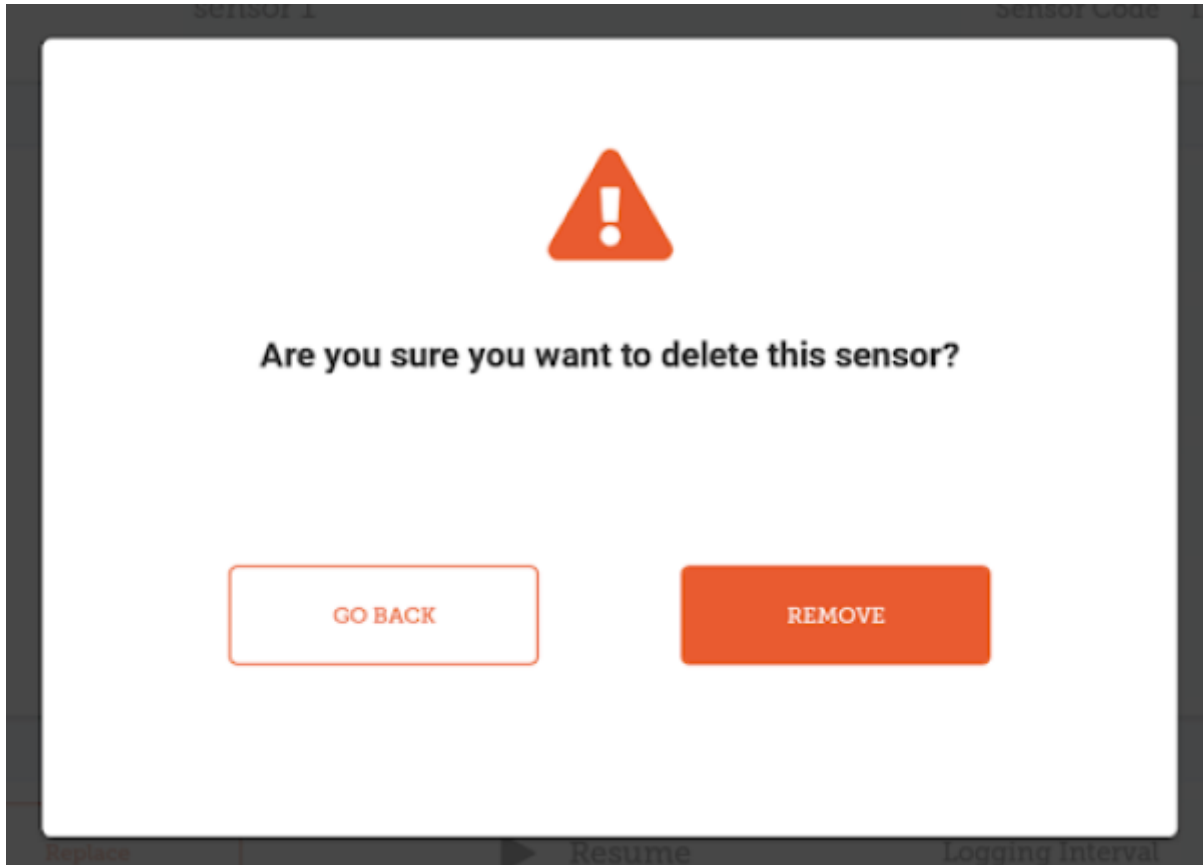
Tapping Replace will open up the scanner and allow you to choose from list of alternative sensors. The list will only show sensors that are not currently connected to your device.



From the list, select the replacement sensor. You can press **Blink** to check that you have the correct sensor (the LED light will flash for this sensor).

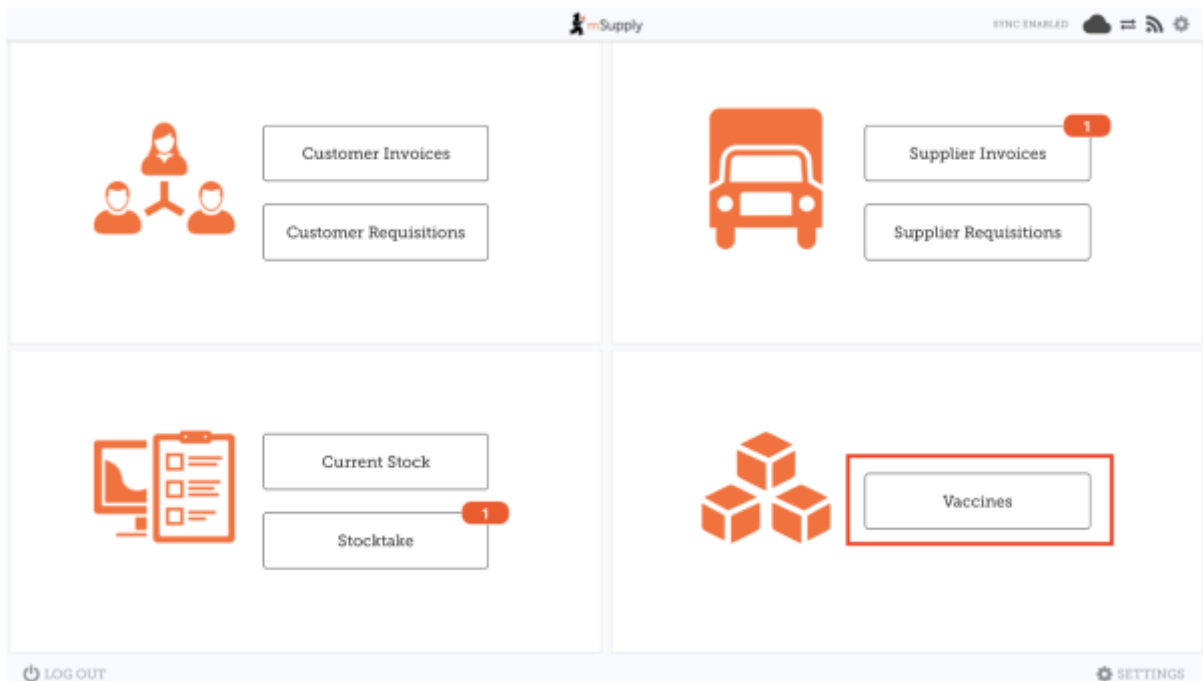
Deleting a Sensor

Tap Remove to remove any sensor no longer being used. You will receive a prompt to confirm the deletion.



Using the Vaccine module

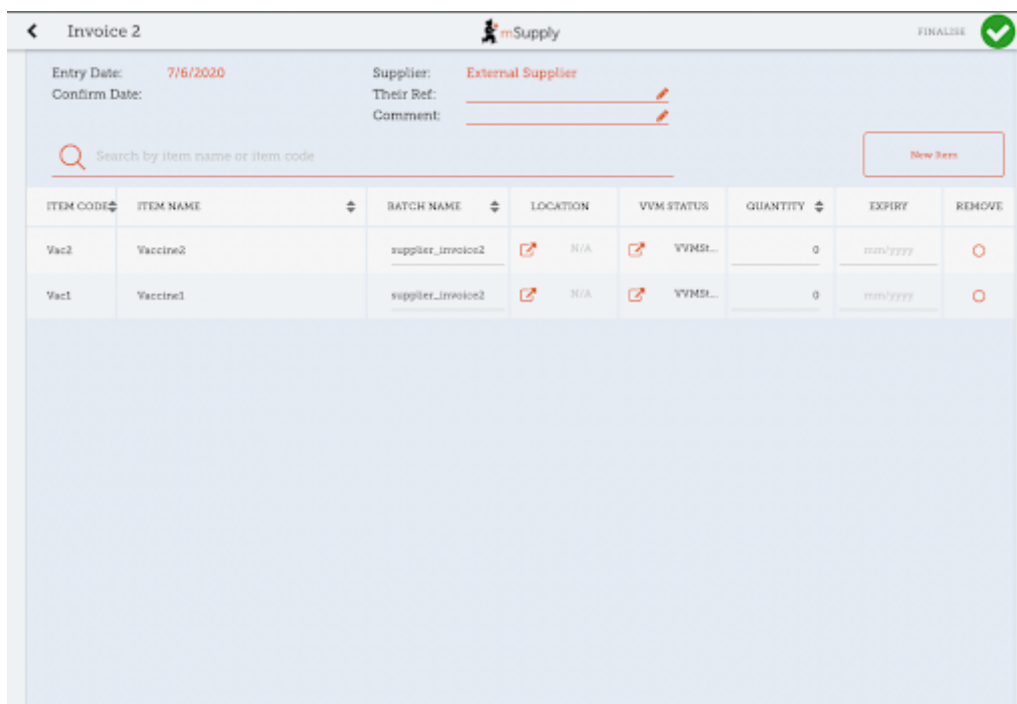
Enabling the Vaccine module will change the look of your menu page, adding an extra Vaccines button.



Supplier Invoices

With vaccine module enabled you automatically get a few extra columns on a supplier invoice for

vaccines - the Location and Vaccine Vial Monitor (VVM) status columns.



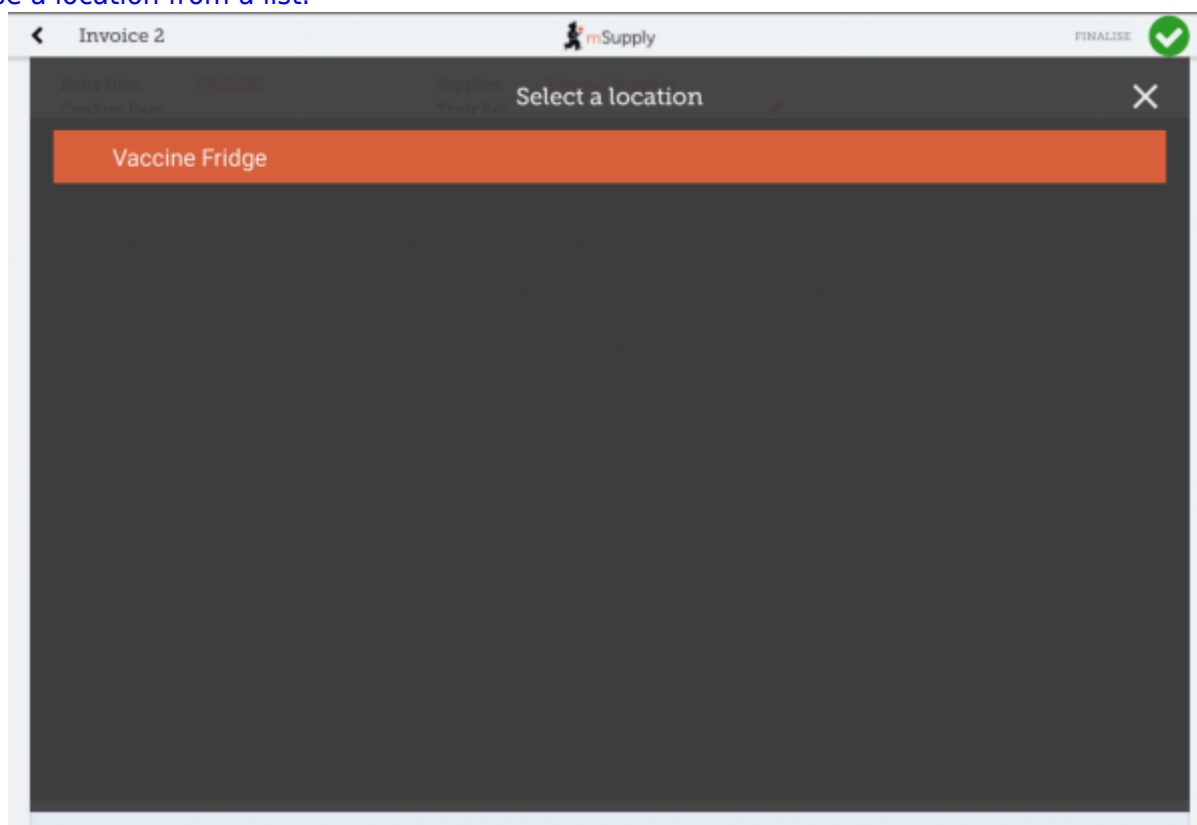
Invoice 2

Entry Date: 7/6/2020 Supplier: External Supplier
 Confirm Date: Their Ref: Comment:

Search by item name or item code

ITEM CODE	ITEM NAME	BATCH NAME	LOCATION	VVM STATUS	QUANTITY	EXPIRY	REMOVE
Vac2	Vaccine2	supplier_invoice2	N/A	VVMS1...	0	mm/yyyy	
Vac1	Vaccine1	supplier_invoice2	N/A	VVMS1...	0	mm/yyyy	

You can select a location by tapping on the arrow icon in the Location cell. This will allow you to choose a location from a list.



Invoice 2

Entry Date: 7/6/2020 Supplier: External Supplier
 Confirm Date: Their Ref: Comment:

Select a location

Vaccine Fridge

You can also change the Vaccine vial monitor status for items that have been defined as vaccines on the cloud server - this defaults to the lowest level, but can be edited by clicking on the arrow icon in the VVM Status column.

Customer Invoices

Vaccine module automatically adds two extra columns on a customer invoice - the Doses and Breach columns.

< Invoice 3
F2NALESE

Entry Date:	7/6/2020	Customer:	General
Confirm Date:	7/6/2020	Their Ref:	<div></div>
Entered By:	josh	Comment:	<div></div>

New Item

Add Master List Items

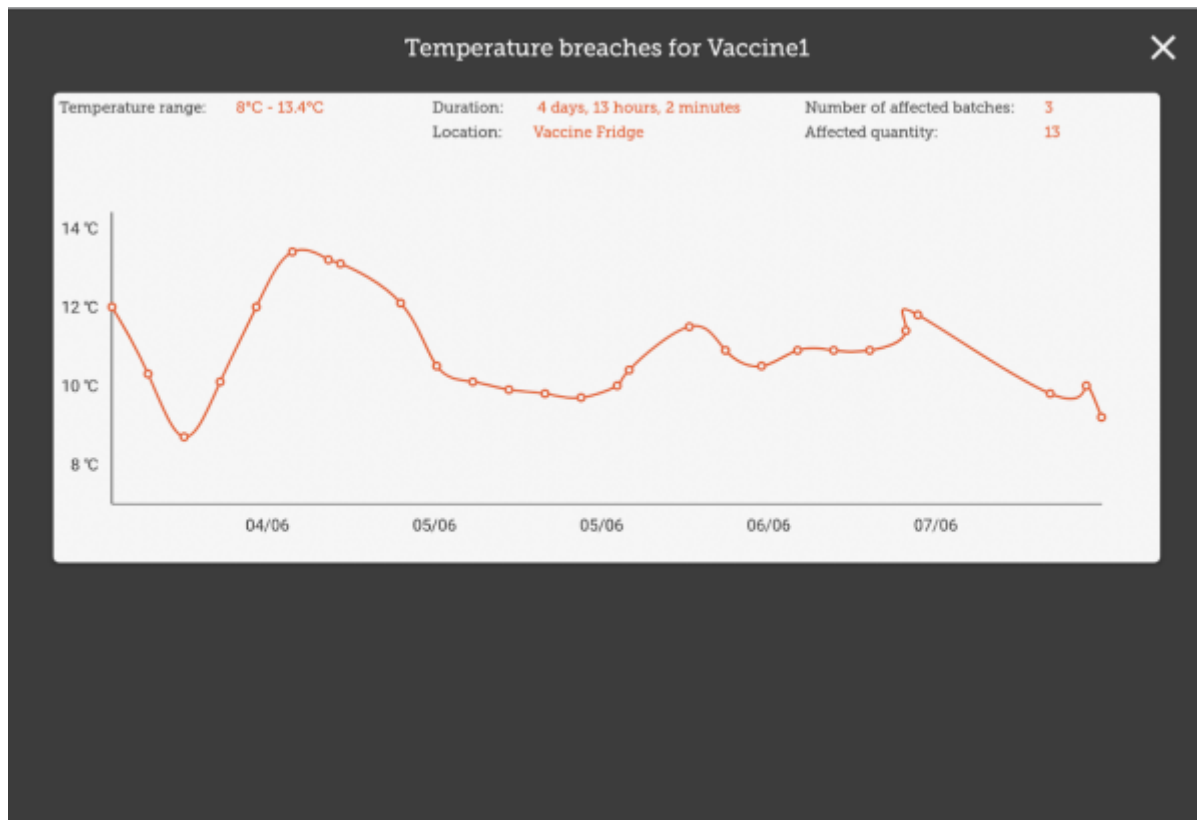
Search by item name or item code

ITEM CODE	ITEM NAME	AVAILABLE STOCK	QUANTITY	DOSES	BREACH	REMOVE
Vac1	Vaccine1	15	<div>3</div>	<div>6</div>		
Ibu	Ibuprofen	0	<div>0</div>	N/A		

- The **Doses** column is for the number of doses actually used (so we can account for open-vial wastage). It will automatically get populated by the *item quantity * number of doses in a vial*, for convenience, but you can also edit it! There is a maximum limit of *the number of doses in a vial for that vaccine * the quantity*, though.
- The **Breach** column shows when a vaccine item has been in a temperature breach. Note that

without entering a quantity into the customer invoice for the item, we don't know exactly what batches are being issued, so the breach icon may not show up yet.

- If the breach icon (an orange triangle with an exclamation) does show for a row, this signals that the stock line has had a temperature breach. Tapping the icon will bring up a graph of the temperature breach. In the example below, the fridge seems to be broken, probably not a good idea to use this batch!



Supplier Requisitions

Tapping on a row in your supplier requisition will show you the date of the last requisition for your vaccine, as well as other details such as the open and closed vial wastage since the last requisition.

Requisition 4

mSupply

FINALISE

Entry Date: 7/6/2020

Entered By: josh

Supplier: General

Months Stock: 1

Comment:

Use Suggested Quantities

New Item

Create Automatic Order

Add Master List Items

Search by item name or item code

ITEM CODE	ITEM NAME	CURRENT STOCK	MONTHLY USE	SUGGESTED QUANTITY	REQUESTED QUANTITY	REMOVE
Vac1	Vaccine1	7	97	95	0	
Vac2	Vaccine2	20	88	69	0	

Last requisition date: 7 Jun 2020

Open vial wastage: 13

Closed vial wastage: 40

Stocktakes

Tapping on a stocktake row for a vaccine item will also show the additional columns for **Doses** and **Breach**.

Stocktake 11

mSupply

FINALISE

Stocktake Name: Stocktake - 11 Jun 2020 10:00

Comment:

ITEM NAME Vaccine1

Add Batch

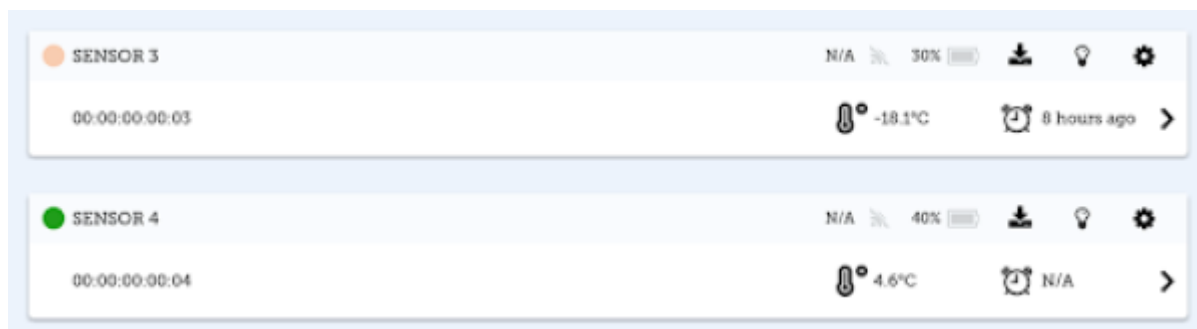
BATCH NAME	LOCATION	VVM STATUS	EXPIRY	SNAPSHOT QUANTITY	ACTUAL QUANTITY	DOSES	BREACH	DIFFERENCE
rier_invoice7	Vaccin...	VVMSt...	12/2020	20	Not Counted	0		N/A

Here, you can adjust the quantities of your vaccine if needed, change the location, or if the vaccine vial monitor status has changed, you can update that here. You can also view the breaches the batch

has been in to help you make decisions!

Vaccine home page

Tapping on the Vaccines button in the menu page will bring you to a list of all the temperature sensors connected to your device and an overview of current status and actions for each sensor.



The sensor header displays the following information:

- **Circle:** a green circle indicates that the sensor is currently within the specified temperature range and the sensor battery is equal or above 25%. A red circle indicates that the sensor is currently outside the specified temperature range or the sensor battery is below 25%.
- **Sensor Name:** as configured during sensor connection.
- **WiFi Icon and last log time:** the time of the last temperature download occurred. The time will flash when download is currently in process.
- **Battery Icon:** a percentage figure and icon showing remaining battery charge for the sensor.
- **Down Arrow Icon:** Tap to export sensor data (temperature logs and breaches) to csv format and send via email data.
- **Light Bulb Icon:** Tap to make the sensor LED light flash/blink.
- **Cog Button:** Tap if you wish to edit the sensor configuration.

The row under the sensor header displays the following information:

- **Sensor's MAC address**
- **Thermometer icon and last recorded temperature**
- **Clock Icon and the time of the last temperature breach** (if applicable)

Tap anywhere on a sensor box to view further details.

Sensor Detail



Tap on the date range on the top left of the screen to change the time (and data) displayed.

The header information is as above.

Temperature Graph

The red line represents the hot consecutive threshold. The blue line represents the cold consecutive threshold. (You can set these here). Any temperature logs outside of the lines (breaches) will be indicated with the exclamation icon. The last temperature logged will display to the right of the graph. The **sensor status rectangle** (surrounding the last temperature log) will be:

- red for a hot breach.
- blue for a cold breach.

Temperature Cards

Underneath the graph are five temperature cards:

1. **Cold Cumulative Breach**: the length of the breach
2. **Cold Consecutive Breach**: the number of breaches
3. **Average temperature**: calculated over the date range selected in degrees Centigrade
4. **Hot Cumulative Breach**: the length of the breach
5. **Hot Consecutive Breach**: the number of breaches

Exporting Sensor Data

It is possible to download the temperature (breach) logs and sensor settings by clicking the 'Download' button in the header (on either the Vaccine home page or the Sensor Details page).



The **Download** screen requires:

- Email address
- Comment

Tapping Download will open a new email in your device's email application. The receiver address and comment will be prepopulated, and the sensor data (in CSV format) attached, ready to send.

A screenshot of the 'Download' screen overlay. It features a white background with a download icon at the top. Below the icon, it says 'A CSV File will be sent to this email address'. There are two input fields: 'Email' and 'Comment', each with a red underline. At the bottom, there is a large orange button labeled 'Download'. The background of the app is visible through the overlay, showing a temperature graph with various data points and labels like 'N/A', '10%', '4.6°C', '20%', '22.8°C', '30%', '-35.4°C', '40%', and '4.1°C'.

TIP: If you change your mind about emailing the data, tap anywhere in the grayed-out area.

Temperature Breaches

Temperature breaches are displayed on the graph as warning icons.

As of February 2024 it is not possible to acknowledge the breaches in mSupply Mobile.

However, note that this functionality is now available in Open mSupply: See <https://docs.msupply.foundation/docs/coldchain/monitoring/#acknowledging-breaches>

Previous: [The Cash Register](#) | | Next: [Mobile Settings](#)

From:

<https://wiki.msupply.foundation/> - **mSupply Foundation Documentation**

Permanent link:

https://wiki.msupply.foundation/en:mobile:user_guide:vaccine

Last update: **2024/02/19 23:47**

