

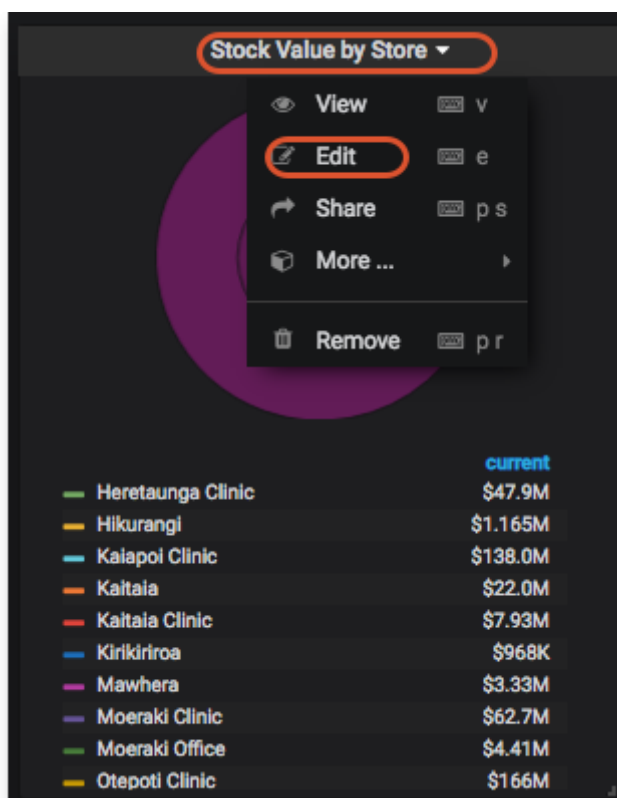
# Panels

There are several different Panel types or visualizations you can have on your dashboard.

For instructions on how to configure each type of Panel click here:

- [Grafana Graphs](#)
- [Grafana Singlestats](#)
- [Grafana Tables](#)
- [Grafana Dash Lists](#)
- [Grafana Text](#)
- mSupply Region Map ( see below )
- mSupply Table ( see below )
- mSupply World Map ( see below )

Clicking the title for a panel exposes a menu. The **Edit** option opens additional configuration options for the panel.

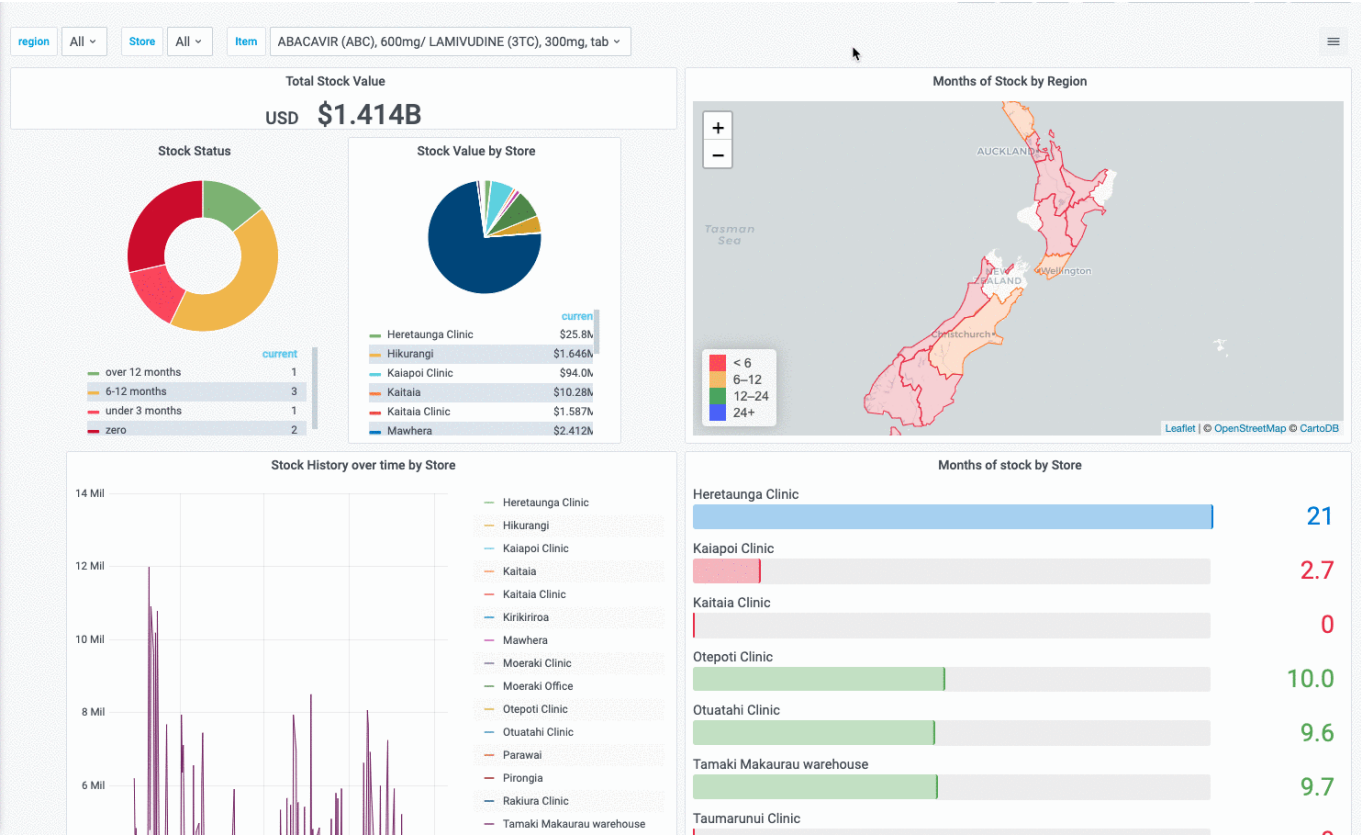


## mSupply Region Map

This is a custom panel which will need to be installed on your server. Contact mSupply support if this panel is not available to you.

The region map displays a value and a geographic outline on a map, and allows you to set the colour thresholds for each region. This gives a quick visualisation of geographical data.

Additionally, you can define clickable actions to update filter values based on the region selected, as shown



Panel
Field
Overrides
>

Display

Centre  
The latitude and longitude of the centre of the map  
-41.2141504,173.9660801

Initial Zoom  
The initial value of zoom on the map  
5

Show Legend  
☒

Mouse Wheel Zoom  
☒

Label Template  
An optional template to use for the label  
\${name}: \${value} months (average)

Linked Variable  
Specify the name of a variable to update when an item on the map is clicked  
region

Decimals  
The number of decimal places to show for values  
0

geoJSON Field  
geojson

Metric Field  
value

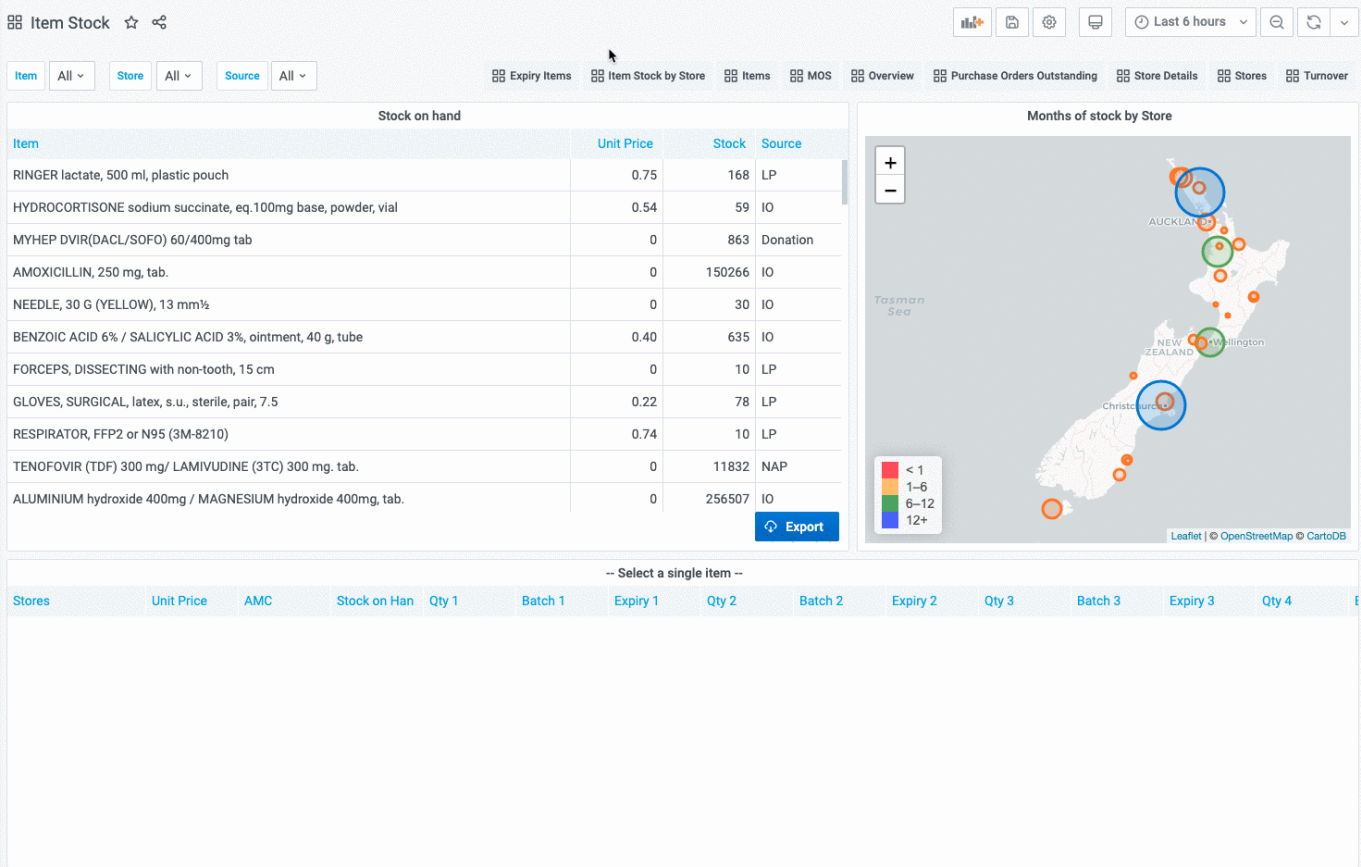
Location Name Field  
region

- **Centre** the latitude and longitude of the centre of the map
- **Initial Zoom** a numerical value for the initial zoom level of the map. Higher values are more zoomed in
- **Show Legend** toggles the display of a tooltip on mouse over
- **Mouse Wheel Zoom** toggles the ability to zoom the map using the mouse wheel
- **Label template** specifies a custom format for the tooltip. Use `${name}` for the name field, `${value}` for the numerical value and `${unit}` for the unit field ( if used )
- **Linked Variable** Is where you can specify a linked filter - the variable with this name is updated when a region is clicked
- **Decimals** the number of decimals to truncate the display value to
- **geoJSON Field** specify the name of the field in your query which returns geoJSON data
- **Metric Field** specifies the name of the numerical value field
- **Location Name Field** specifies the name of the field containing a text value. Used in the tooltip / label as the name of the region

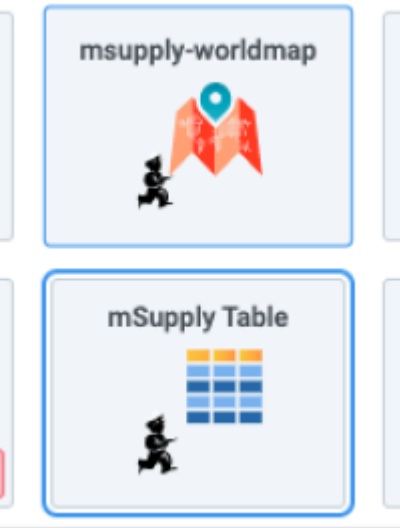
## mSupply Table

This is a custom panel which will need to be installed on your server. Contact mSupply support if this panel is not available to you. The mSupply table is an extension of the bundled Table plugin, which adds \* clickable actions to cells which update filter values \* a button which allows exporting the data direct to excel (requires the msupply-dashboard-app plugin also )

Be aware that it also removes the Filter functionality of the bundled table plugin.



To use, select the msupply-table visualisation option:



The new options available in the **Display** section are:

## Display

### Show header

To display table's header or not to display



### Show export button

Display or hide the export to excel option



### Export button title

The title of the export button

\* **Show export button** toggles display of the export button \* **Export button title** which allows customising of the export button text

And the option to link a cell to a variable is per field, so it can be specified as an override to select this for a single column only:

## Override 1

### Fields with name

### Linked Variable

Specify the name of a variable to update when this field is clicked

## mSupply World Map

Previous: [Getting Started](#) | | Next: [Time range controls](#)

From:

<https://wiki.msupply.foundation/> - mSupply Foundation Documentation

Permanent link:

<https://wiki.msupply.foundation/en:dashboard:panels?rev=1610684567>

Last update: **2021/01/15 04:22**

