

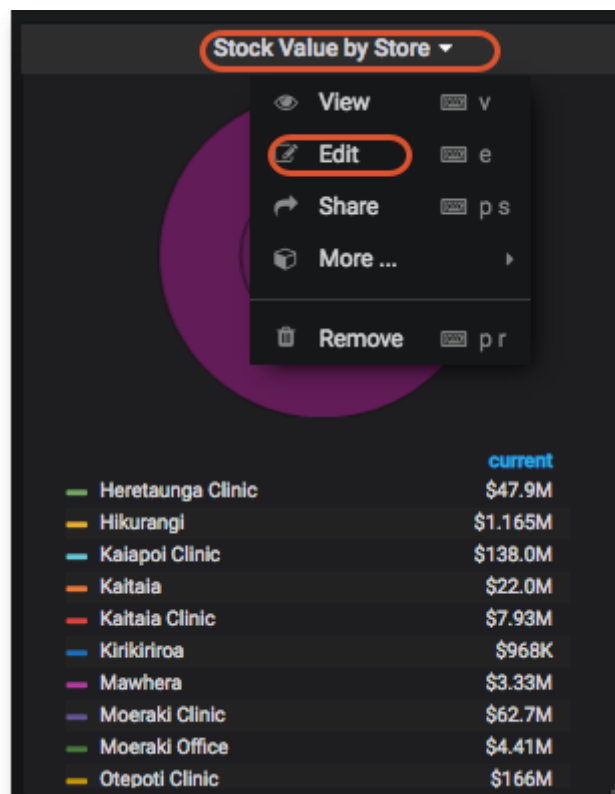
Panels

There are several different Panel types or visualizations you can have on your dashboard.

For instructions on how to configure each type of Panel click here:

- [Grafana Graphs](#)
- [Grafana Singlestats](#)
- [Grafana Tables](#)
- [Grafana Dash Lists](#)
- [Grafana Text](#)
- mSupply Region Map (see below)
- mSupply Table (see below)
- mSupply World Map (see below)

Clicking the title for a panel exposes a menu. The **Edit** option opens additional configuration options for the panel.

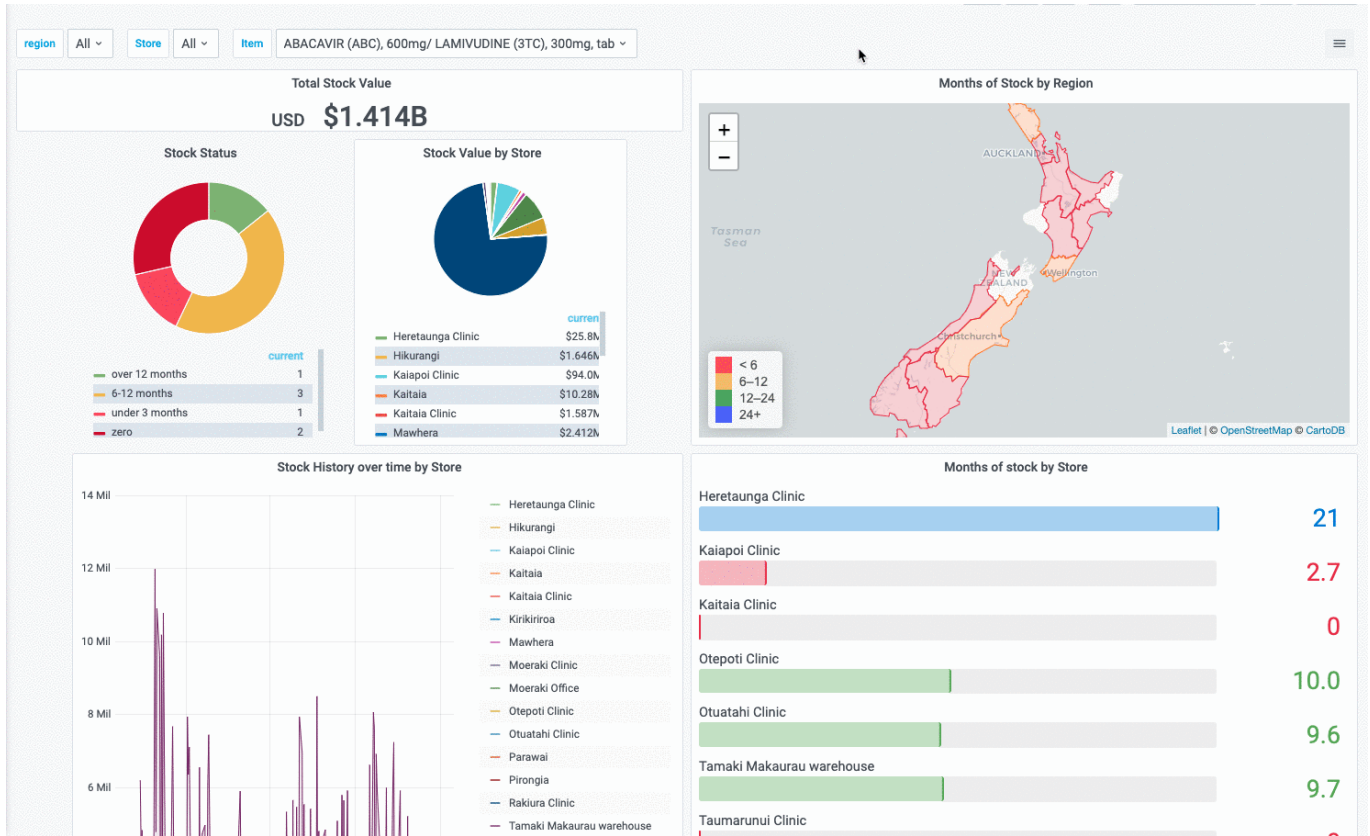


mSupply Region Map

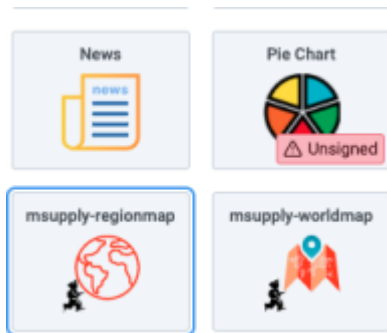
This is a custom panel which will need to be installed on your server. Contact mSupply support if this panel is not available to you.

The region map displays a value and a geographic outline on a map, and allows you to set the colour thresholds for each region. This gives a quick visualisation of geographical data.

Additionally, you can define clickable actions to update filter values based on the region selected, as shown



To use, select the msupply-regionmap visualisation option:



There are a number of options available in the **Display** section:

Panel
Field
Overrides
>

▼ **Display**

Centre
The latitude and longitude of the centre of the map

Initial Zoom
The initial value of zoom on the map

Show Legend

Mouse Wheel Zoom

Label Template
An optional template to use for the label

Linked Variable
Specify the name of a variable to update when an item on the map is clicked

Decimals
The number of decimal places to show for values

geoJSON Field

Metric Field

Location Name Field

- **Centre** the latitude and longitude of the centre of the map
- **Initial Zoom** a numerical value for the initial zoom level of the map. Higher values are more zoomed in
- **Show Legend** toggles the display of a tooltip on mouse over
- **Mouse Wheel Zoom** toggles the ability to zoom the map using the mouse wheel
- **Label template** specifies a custom format for the tooltip. Use `${name}` for the name field, `${value}` for the numerical value and `${unit}` for the unit field (if used)
- **Linked Variable** Is where you can specify a linked filter - the variable with this name is updated when a region is clicked
- **Decimals** the number of decimals to truncate the display value to
- **geoJSON Field** specify the name of the field in your query which returns geoJSON data
- **Metric Field** specifies the name of the numerical value field
- **Location Name Field** specifies the name of the field containing a text value. Used in the tooltip / label as the name of the region

mSupply Table

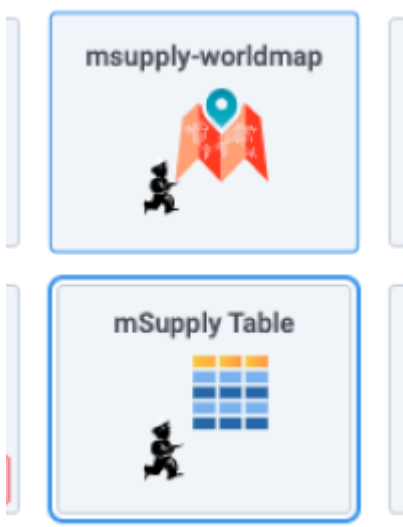
This is a custom panel which will need to be installed on your server. Contact mSupply support if this panel is not available to you. The mSupply table is an extension of the bundled Table plugin, which adds * clickable actions to cells which update filter values * a button which allows exporting the data direct to excel (requires the msupply-dashboard-app plugin also)

Be aware that it also removes the Filter functionality of the bundled table plugin.

The screenshot shows the mSupply dashboard interface. At the top, there's a header with 'Item Stock' and various navigation icons. Below the header, there are tabs for 'Item', 'Store', and 'Source'. The main content area is divided into two panels. The left panel, titled 'Stock on hand', contains a table with columns for 'Item', 'Unit Price', 'Stock', and 'Source'. The right panel, titled 'Months of stock by Store', shows a map of New Zealand with colored circles indicating stock levels at different locations. Below the main content, there's a section for selecting a single item, with columns for 'Stores', 'Unit Price', 'AMC', 'Stock on Han', 'Qty 1', 'Batch 1', 'Expiry 1', 'Qty 2', 'Batch 2', 'Expiry 2', 'Qty 3', 'Batch 3', 'Expiry 3', and 'Qty 4'.

Item	Unit Price	Stock	Source
RINGER lactate, 500 ml, plastic pouch	0.75	168	LP
HYDROCORTISONE sodium succinate, eq.100mg base, powder, vial	0.54	59	IO
MYHEP DVIR(DACL/SOFO) 60/400mg tab	0	863	Donation
AMOXICILLIN, 250 mg, tab.	0	150266	IO
NEEDLE, 30 G (YELLOW), 13 mm½	0	30	IO
BENZOIC ACID 6% / SALICYLIC ACID 3%, ointment, 40 g, tube	0.40	635	IO
FORCEPS, DISSECTING with non-tooth, 15 cm	0	10	LP
GLOVES, SURGICAL, latex, s.u., sterile, pair, 7.5	0.22	78	LP
RESPIRATOR, FFP2 or N95 (3M-8210)	0.74	10	LP
TENOFOVIR (TDF) 300 mg/ LAMIVUDINE (3TC) 300 mg. tab.	0	11832	NAP
ALUMINIUM hydroxide 400mg / MAGNESIUM hydroxide 400mg, tab.	0	256507	IO

To use, select the msupply-table visualisation option:



mSupply World Map

Previous: [Getting Started](#) | | Next: [Time range controls](#)

From:

<https://wiki.msupply.foundation/> - **mSupply Foundation Documentation**

Permanent link:

<https://wiki.msupply.foundation/en:dashboard:panels?rev=1610684341>

Last update: **2021/01/15 04:19**

