

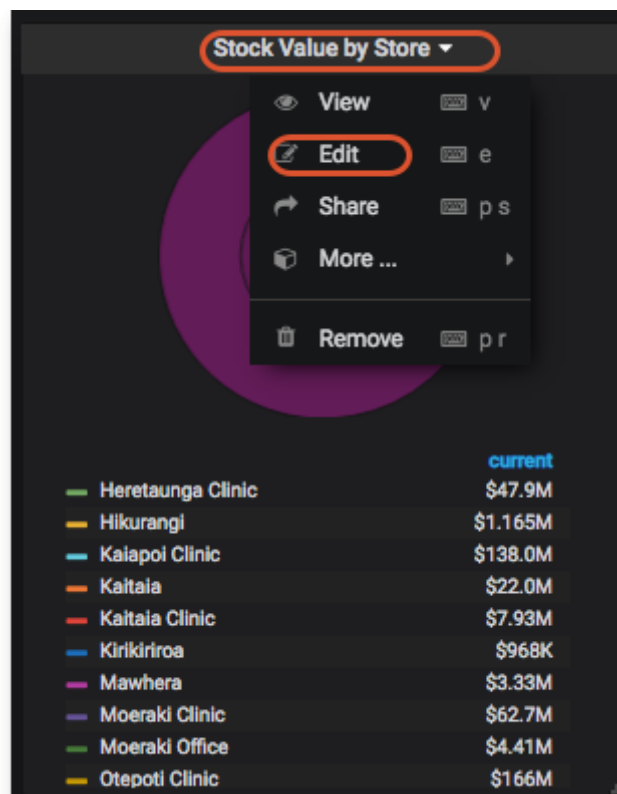
# Panels

There are several different Panel types or visualizations you can have on your dashboard.

For instructions on how to configure each type of Panel click here:

- [Grafana Graphs](#)
- [Grafana Singlestats](#)
- [Grafana Tables](#)
- [Grafana Dash Lists](#)
- [Grafana Text](#)
- mSupply Region Map ( see below )
- mSupply Table ( see below )
- mSupply World Map ( see below )

Clicking the title for a panel exposes a menu. The **Edit** option opens additional configuration options for the panel.

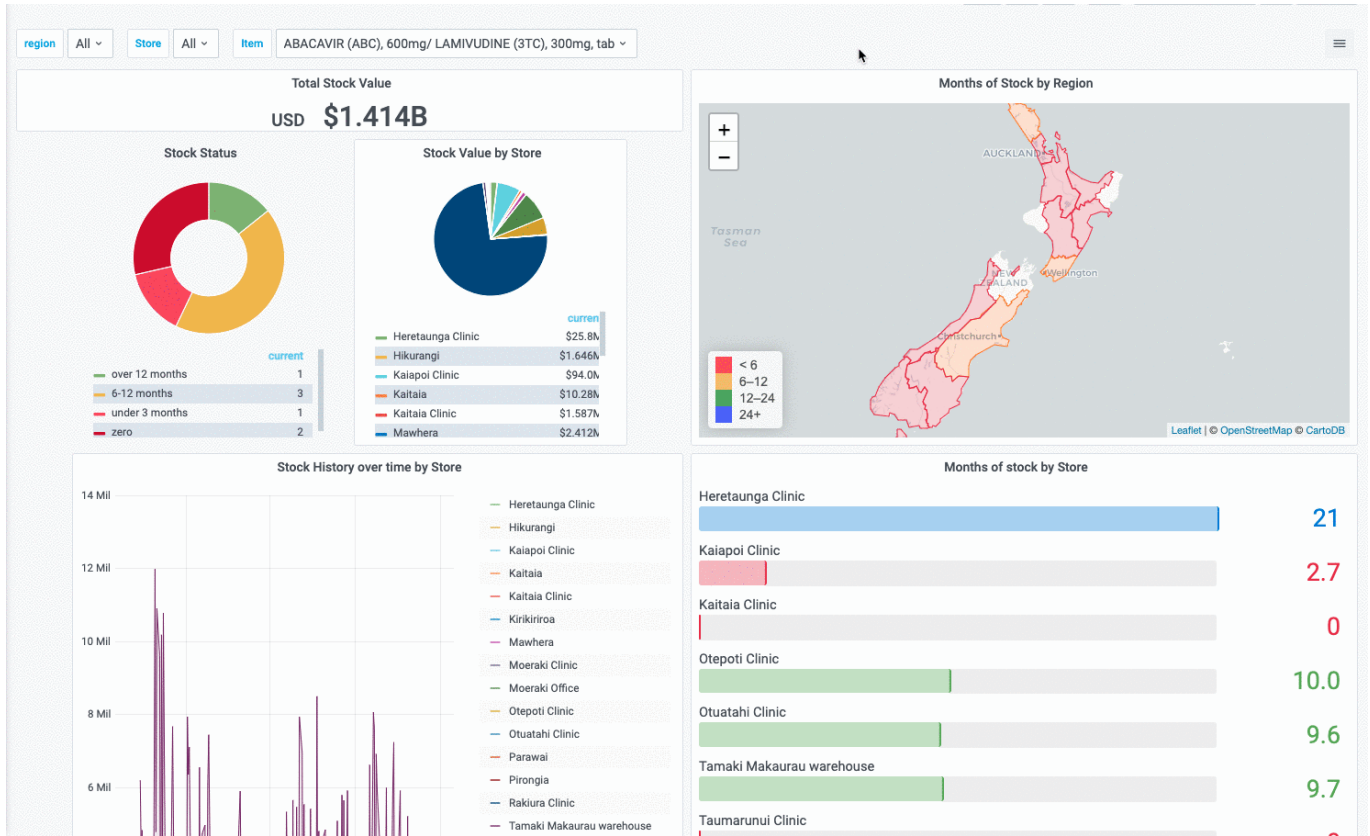


## mSupply Region Map

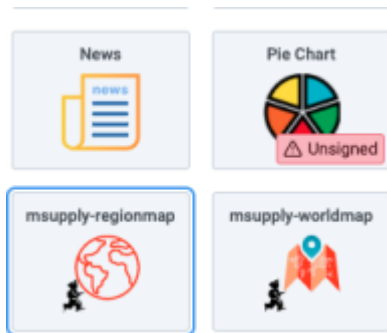
This is a custom panel which will need to be installed on your server. Contact mSupply support if this panel is not available to you.

The region map displays a value and a geographic outline on a map, and allows you to set the colour thresholds for each region. This gives a quick visualisation of geographical data.

Additionally, you can define clickable actions to update filter values based on the region selected, as shown



To use, select the msupply-regionmap visualisation option:



There are a number of options available in the **Display** section:

Panel
Field
Overrides
>

▼ **Display**

**Centre**  
The latitude and longitude of the centre of the map

**Initial Zoom**  
The initial value of zoom on the map

**Show Legend**

**Mouse Wheel Zoom**

**Label Template**  
An optional template to use for the label

**Linked Variable**  
Specify the name of a variable to update when an item on the map is clicked

**Decimals**  
The number of decimal places to show for values

**geoJSON Field**

**Metric Field**

**Location Name Field**

- **Centre** the latitude and longitude of the centre of the map
- **Initial Zoom** a numerical value for the initial zoom level of the map. Higher values are more zoomed in
- **Show Legend** toggles the display of a tooltip on mouse over
- **Mouse Wheel Zoom** toggles the ability to zoom the map using the mouse wheel
- **Label template** specifies a custom format for the tooltip. Use `${name}` for the name field, `${value}` for the numerical value and `${unit}` for the unit field ( if used )
- **Linked Variable** Is where you can specify a linked filter - the variable with this name is updated when a region is clicked
- **Decimals** the number of decimals to truncate the display value to
- **geoJSON Field** specify the name of the field in your query which returns geoJSON data
- **Metric Field** specifies the name of the numerical value field
- **Location Name Field** specifies the name of the field containing a text value. Used in the tooltip / label as the name of the region

## mSupply Table

## mSupply World Map

Previous: [Getting Started](#) | | Next: [Time range controls](#)

From:

<https://wiki.msupply.foundation/> - **mSupply Foundation Documentation**

Permanent link:

<https://wiki.msupply.foundation/en:dashboard:panels?rev=1610666691>

Last update: **2021/01/14 23:24**

