

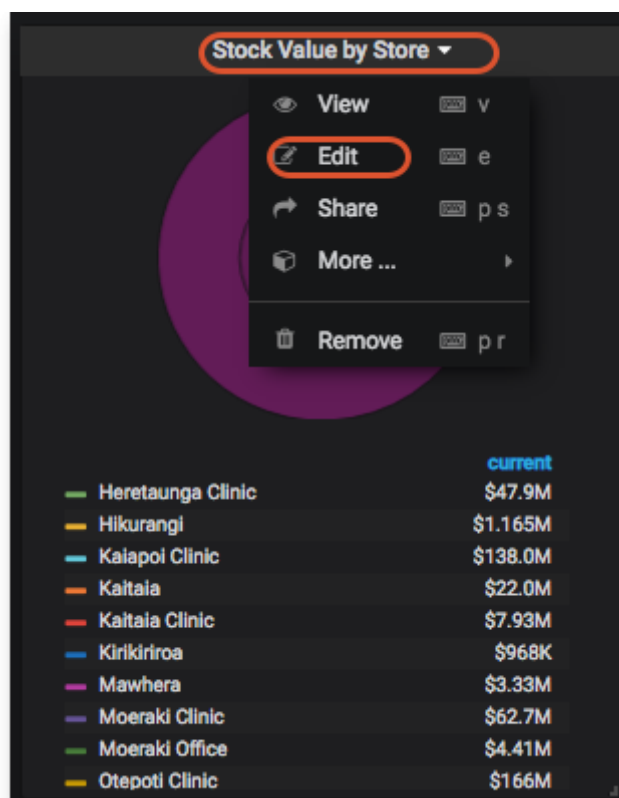
Panels

There are several different Panel types or visualizations you can have on your dashboard.

For instructions on how to configure each type of Panel click here:

- [Grafana Graphs](#)
- [Grafana Singlestats](#)
- [Grafana Tables](#)
- [Grafana Dash Lists](#)
- [Grafana Text](#)
- mSupply Region Map (see below)
- mSupply Table (see below)
- mSupply World Map (see below)

Clicking the title for a panel exposes a menu. The **Edit** option opens additional configuration options for the panel.

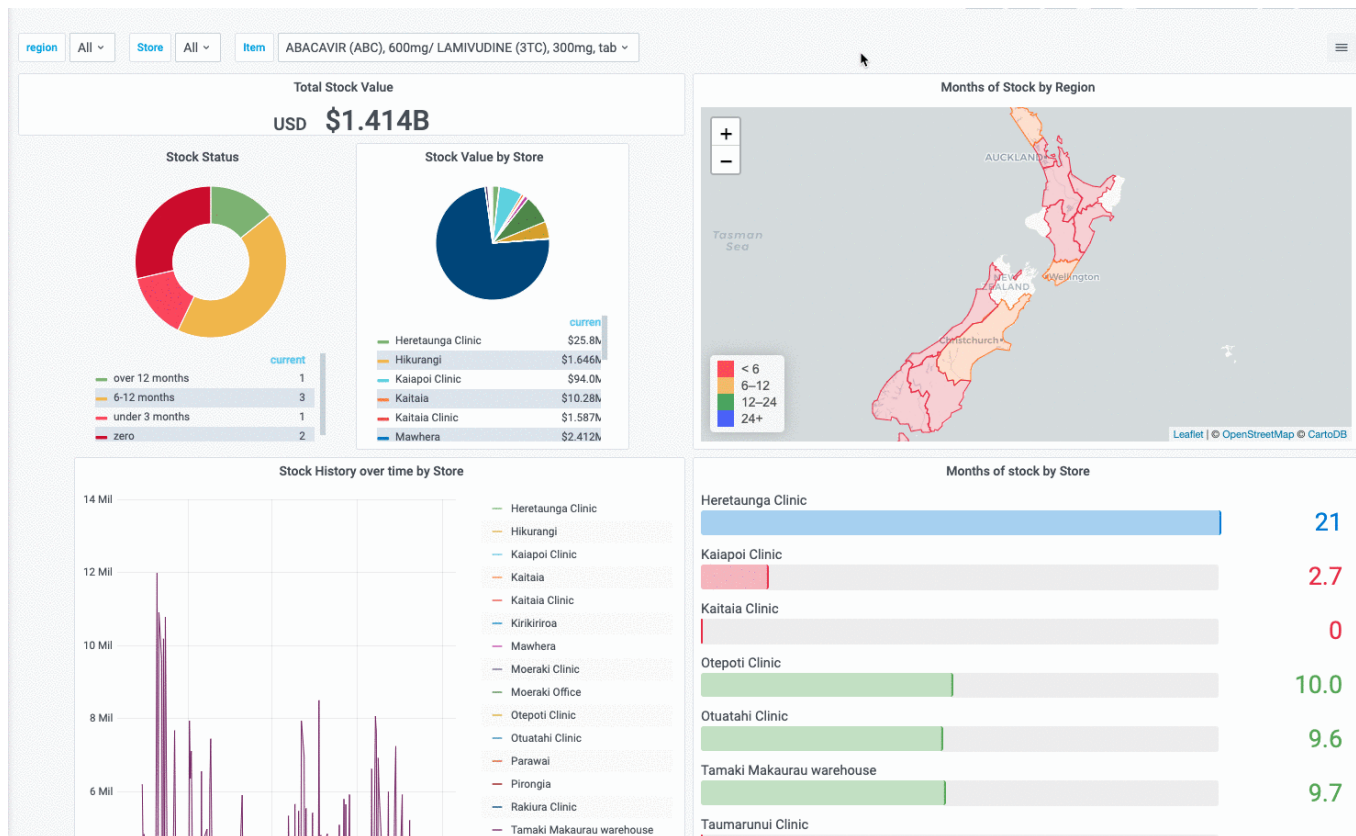


mSupply Region Map

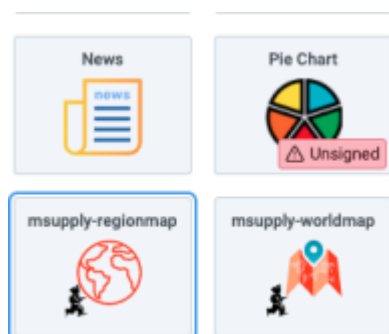
This is a custom panel which will need to be installed on your server. Contact mSupply support if this panel is not available to you.

The region map displays a value and a geographic outline on a map, and allows you to set the colour thresholds for each region. This gives a quick visualisation of geographical data.

Additionally, you can define clickable actions to update filter values based on the region selected, as shown



To use, select the msupply-regionmap visualisation option:



There are a number of options available in the **Display** section:

- **Centre** the latitude and longitude of the centre of the map
- **Initial Zoom** a numerical value for the initial zoom level of the map. Higher values are more zoomed in
- **Show Legend** toggles the display of a tooltip on mouse over
- **Mouse Wheel Zoom** toggles the ability to zoom the map using the mouse wheel
- **Label template** specifies a custom format for the tooltip. Use `${name}` for the name field, `${value}` for the numerical value and `${unit}` for the unit field (if used)
- **Linked Variable**

Panel

Field

Overrides

>

▼ Display

Centre

The latitude and longitude of the centre of the map

-41.2141504,173.9660801

Initial Zoom

The initial value of zoom on the map

5

Show Legend

☒

Mouse Wheel Zoom

☒

Label Template

An optional template to use for the label

\$(name): \$(value) months (average)

Linked Variable

Specify the name of a variable to update when an item on the map is clicked

region

Decimals

The number of decimal places to show for values

0

geoJSON Field

geojson

Metric Field

value

Location Name Field

region

Previous: [Getting Started](#) | | Next: [Time range controls](#)

From:

<https://wiki.msupply.foundation/> - **mSupply Foundation Documentation**

Permanent link:

<https://wiki.msupply.foundation/en:dashboard:panels?rev=1610666480>

Last update: **2021/01/14 23:21**

